

# Transportation of Forest Products in North Carolina

---

Understanding Our Challenges...  
Recognizing Our Opportunities



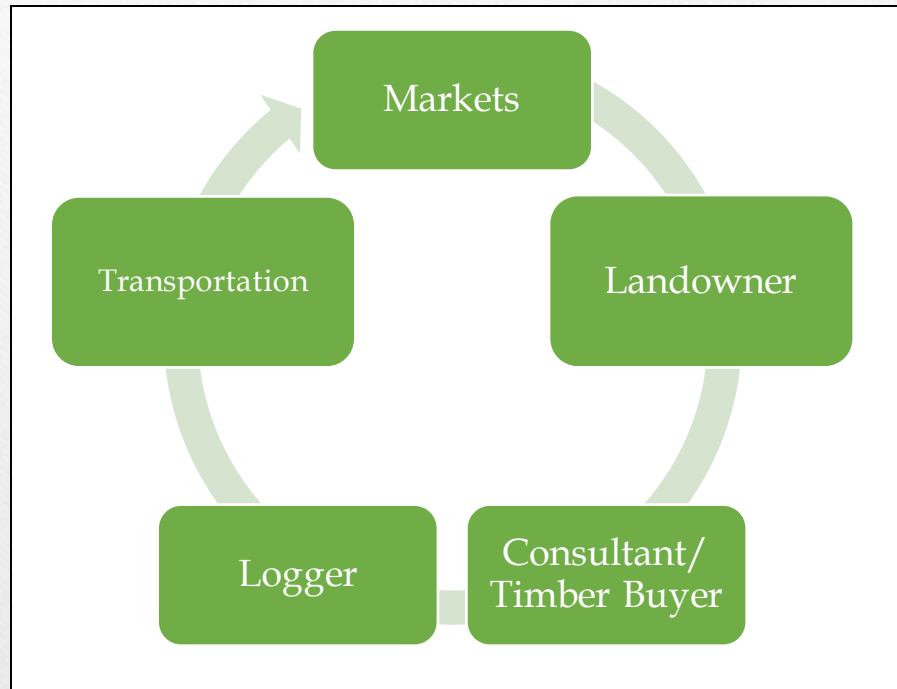
John Hatcher, Ph.D.  
NCFA Executive Vice President  
North Carolina Forestry Association  
(800) 231-7723 ext. 5  
[JHatcher@ncforestry.org](mailto:JHatcher@ncforestry.org)



- 
- Founded in 1911, the NCFA is an advocacy group that promotes the management of healthy forests, a vibrant forest products industry, and the importance of private property rights.
  - The NCFA is the state's most diverse group of forestry related interests, ranging from private landowners with less than 75 acres to large sawmill and paper facilities.
  - Current membership > 4,100



# Forestry Supply Chain



# Today's Focus: Transportation

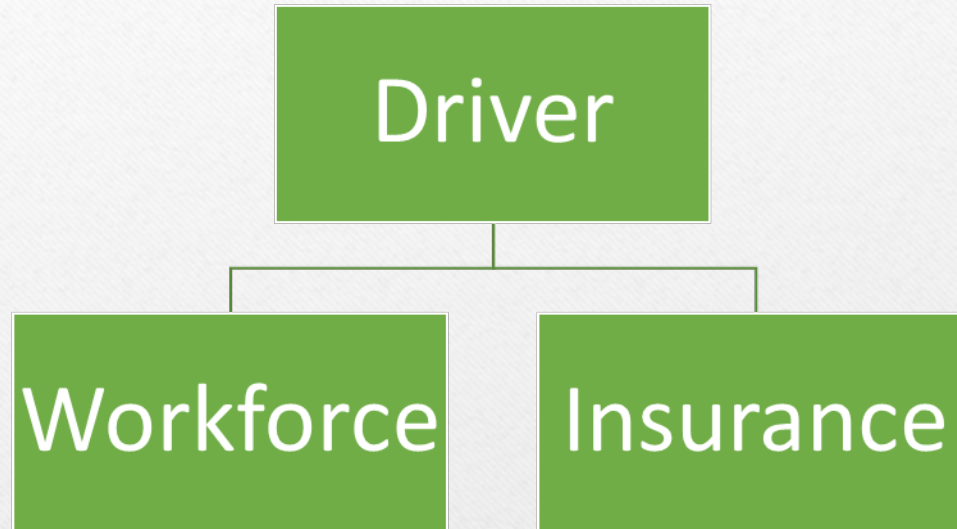




# Transportation- What's Involved?

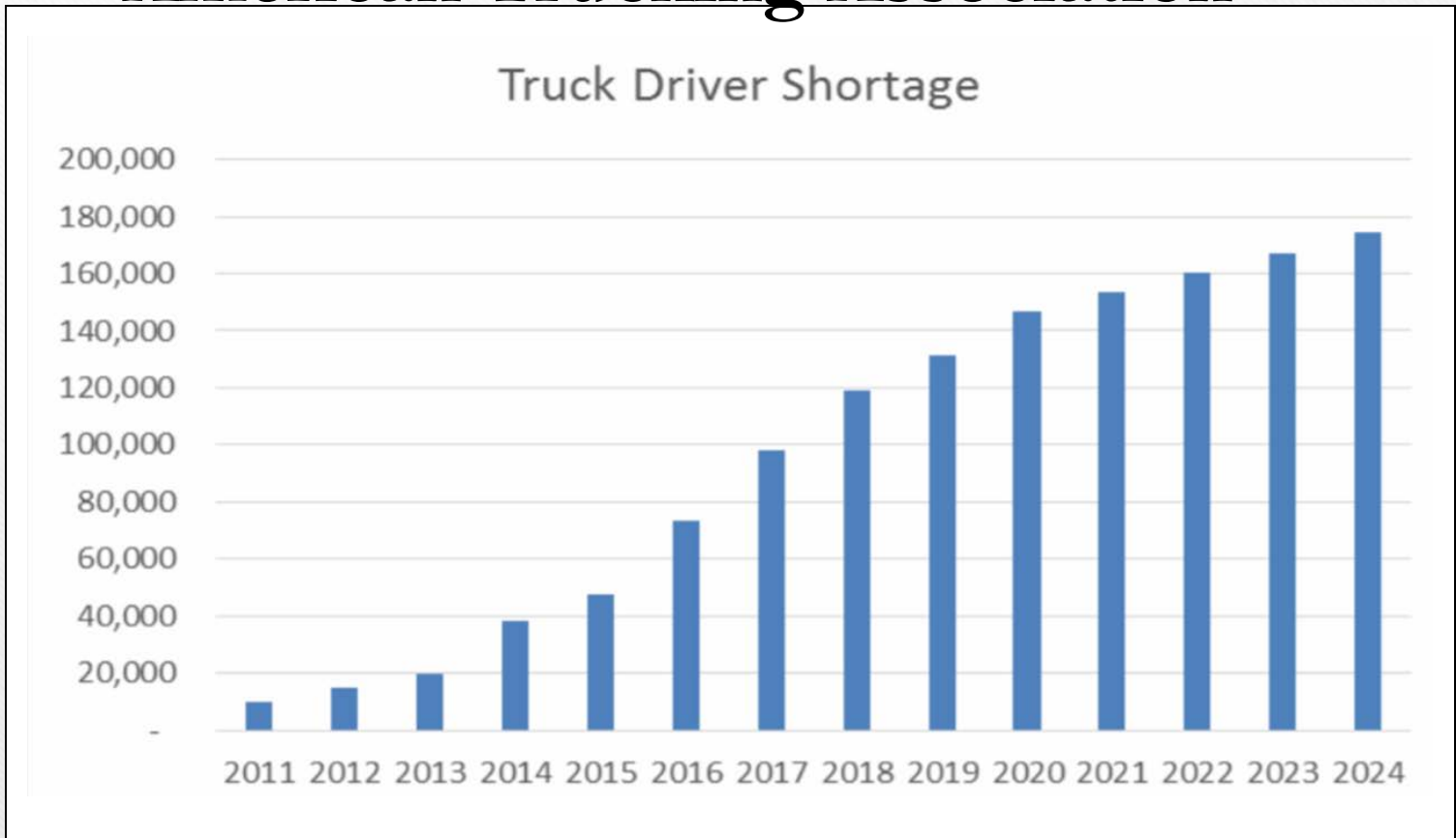


# Truck Driver Challenges





# Projected Truck Driver Shortage- American Trucking Association



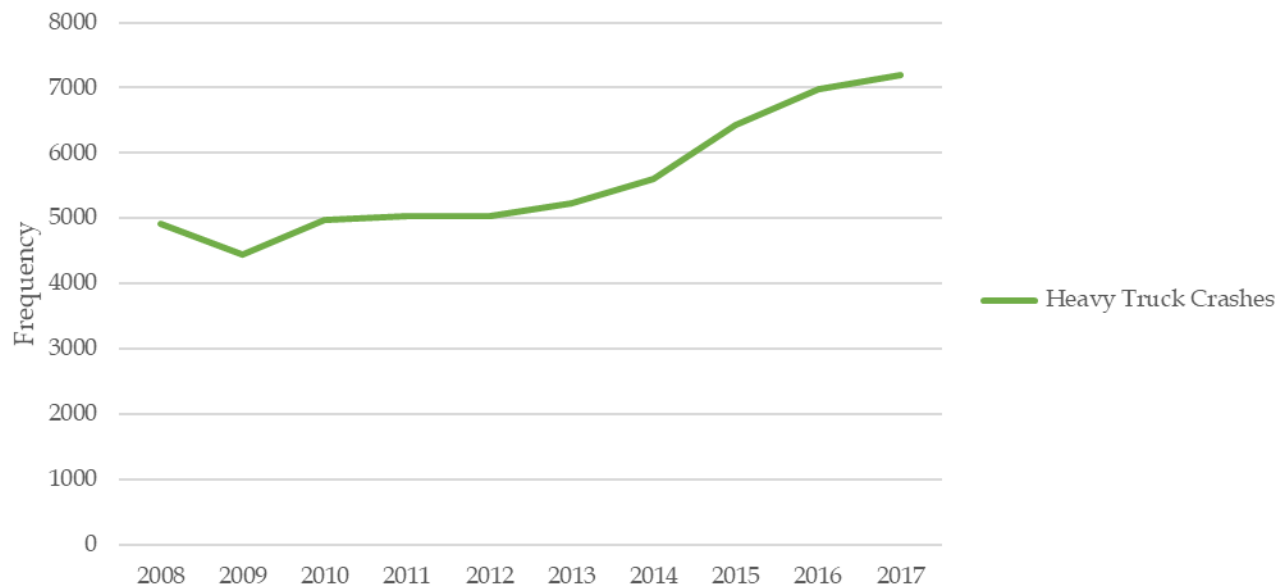
# Truck Driver Challenges

- Aging workforce... younger generation is not interested.
- Difficulty finding drivers that can pass a drug test.
- Difficulty finding drivers that are insurance/government compliant
- Weather conditions can shorten work week/mud season



# Insurance Issues

**Commercial Truck Crashes from 2008-2017 in North Carolina**

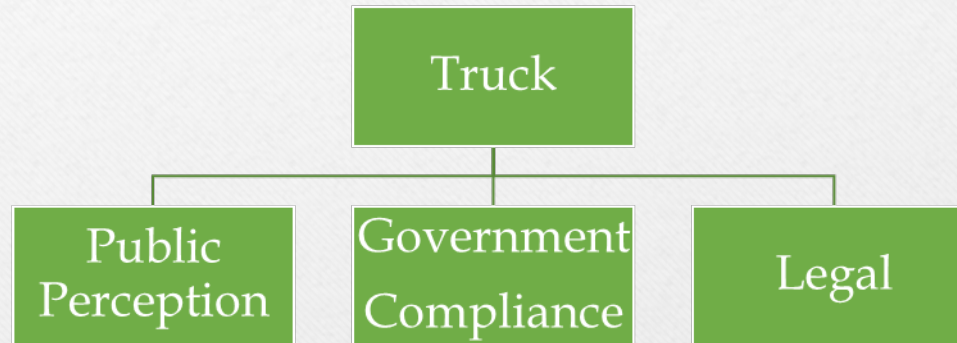


# Insurance Issues

- Due to the potential for traffic accidents, tractor-trailer truck drivers have **one of the highest rates of injury** of all occupations.
- Drivers employed less than **6 months** with company... have more accidents.
- Most **compensation methods** encourage speeding.
- Commercial vehicle fatal crashes- **speed** (too fast for conditions) is the largest contributing factor, followed by **distraction** or **inattention**, and then **impairment**.
- Limited number of insurance providers- some **will not write trucking** without logging operation as primary insured risk.



# Truck Ownership Challenges



# Public Perception



- The cost to repair and maintain current fleet.
- The cost to upgrade to newer more dependable trucks.
- High fuel costs.
- Lack of long-term contracts for financial stability and planning.

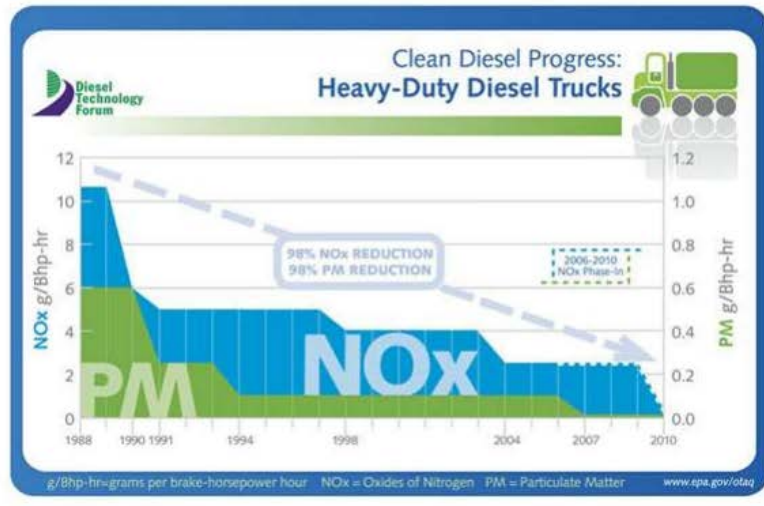


# Public Perception

**Naked woman with log-truck driver in 'horrific' school-bus crash, sheriff says**



# Government Compliance





# Legal Issues

## Jury Awards Lawyer and Wife \$16.5M for Crash With Logging Truck

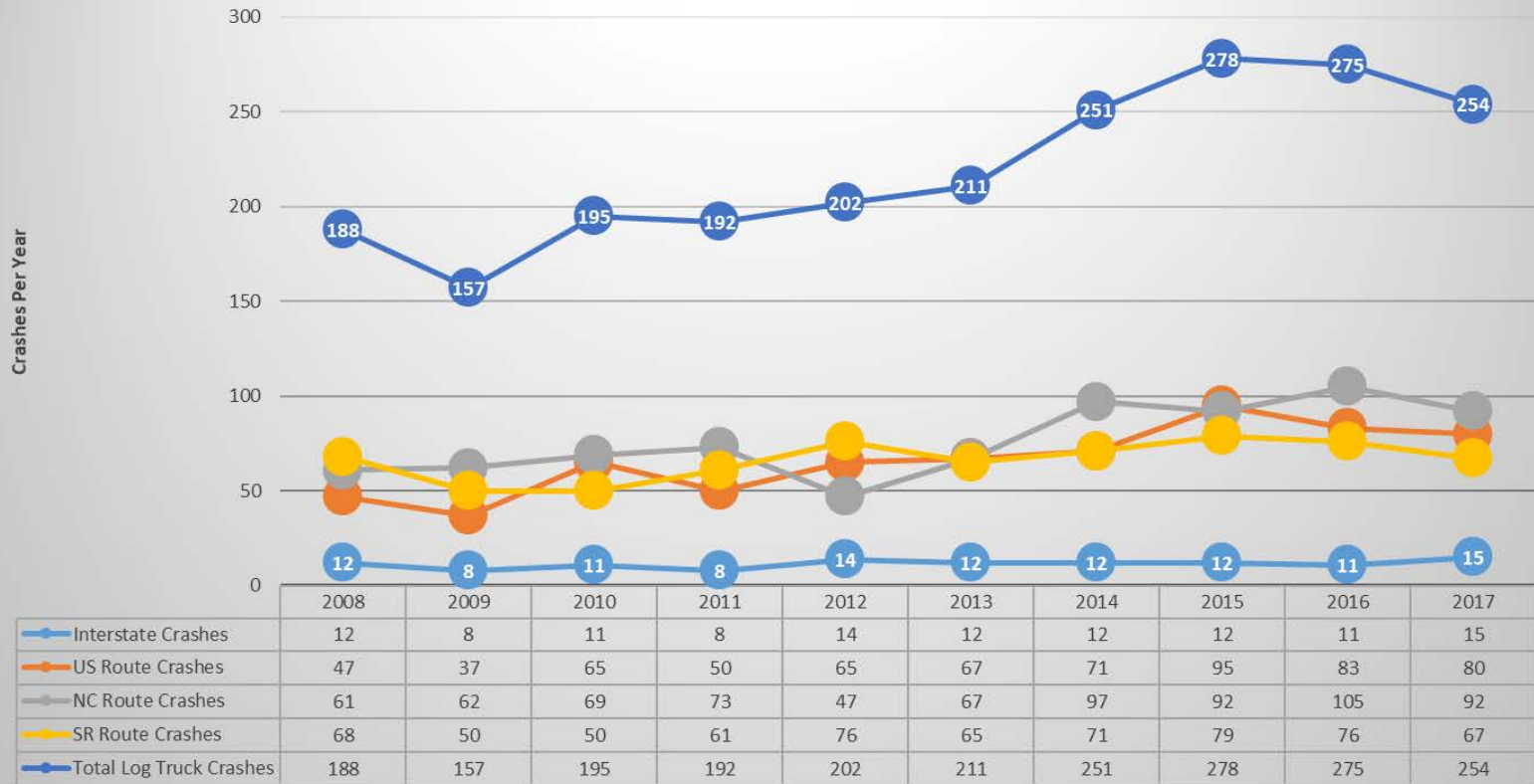
A jury in a **SMALL** town returned a \$16.5 million verdict against the owner of a logging truck that pulled out onto a **RURAL** highway, blocking the path of a pickup driven by a lawyer who was severely injured in the resulting crash...

The plaintiff's attorney focused on the "loss of capacity to labor" and was careful not to talk about loss of earnings because the plaintiff is now 72.

The plaintiff suffered broken bones and back problems from the crash. He still practices law, but he suffers from sleeplessness and exhaustion due to pain from his injuries...

# Infrastructure Challenges

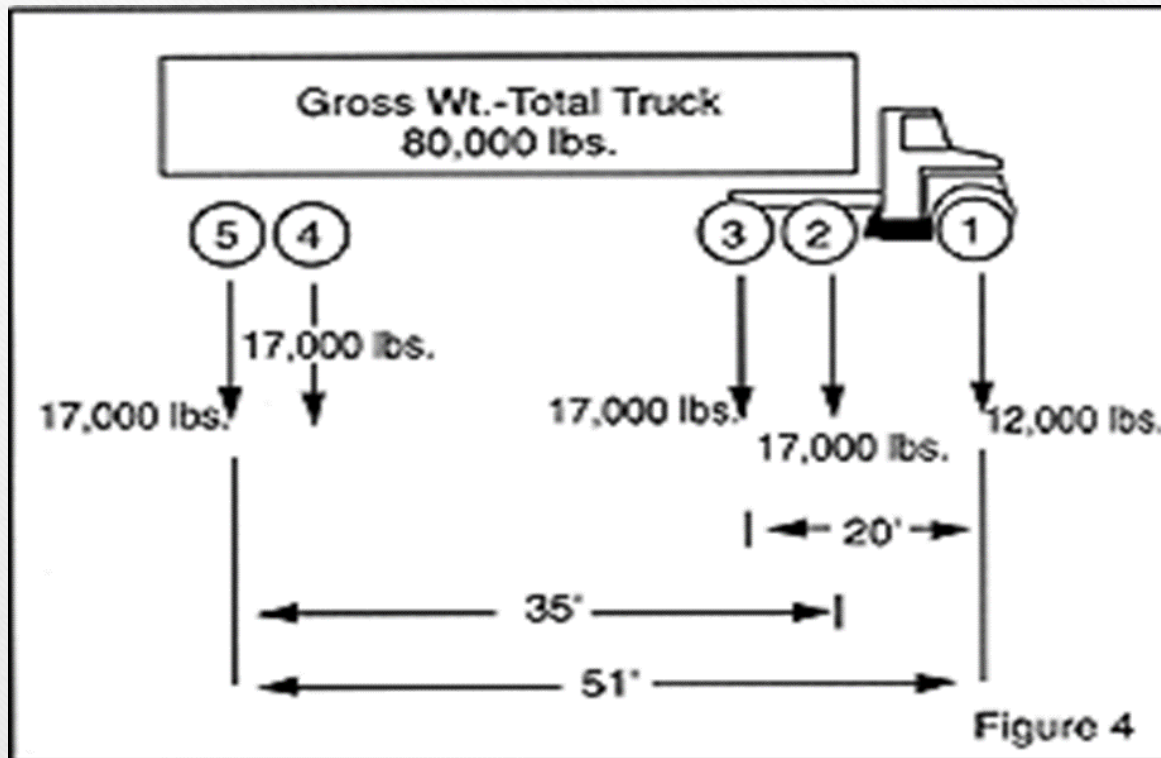
## Log Truck Crashes By Route





# Infrastructure Challenges

- **Truck weight-** The maximum allowable tractor/trailer weight on federal highways is 80,000 pounds- but you need to keep the “bridge” formula in mind.



➤ In 2012, NCFA supported legislation that allows trucks hauling raw wood products a weight tolerance of 10,000 pounds over the federal weight restriction of 80,000 pounds.

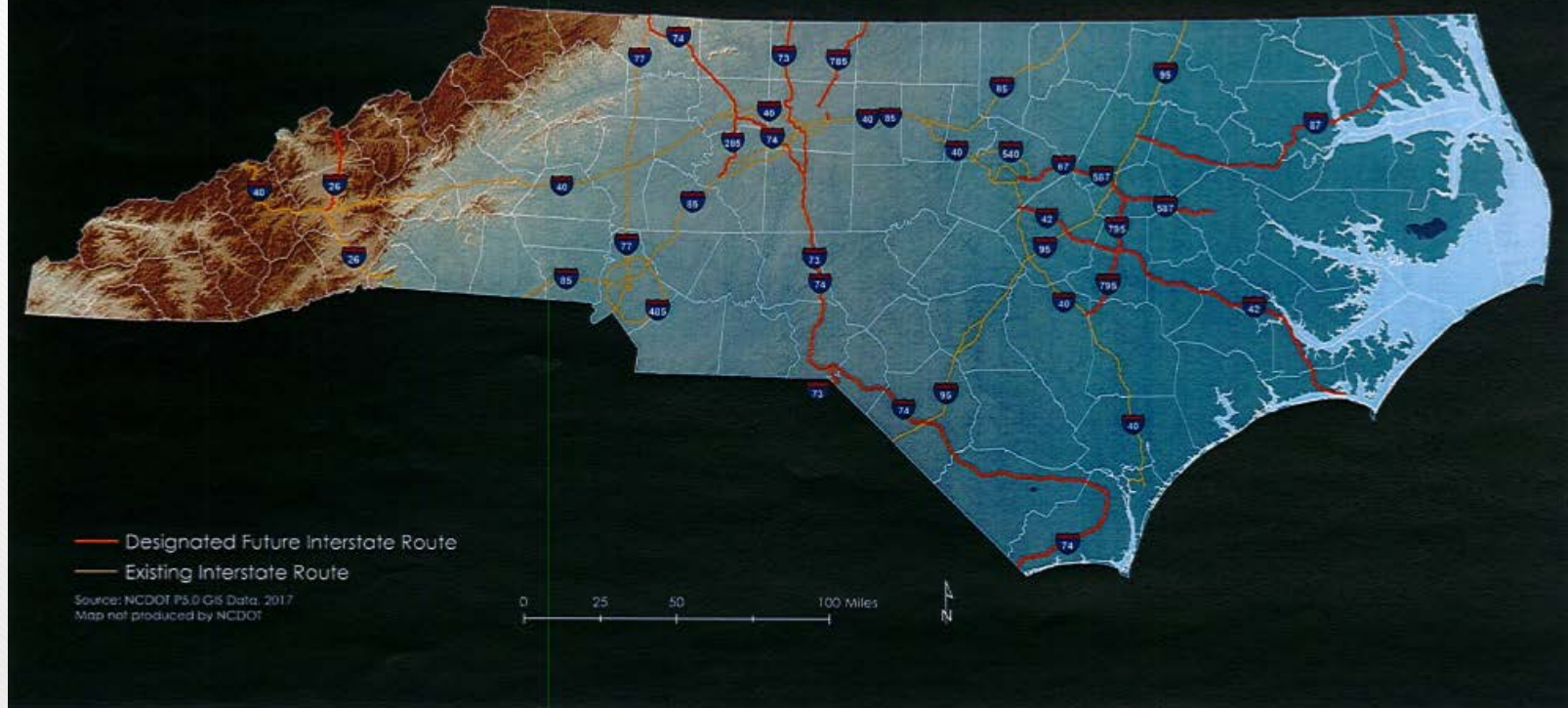
➤ The new tolerance for gross weight for a truck to weigh up to 90,000 pounds gross weight, a single-axle weight of 26,000 pounds, and a tandem weight of 44,000 pounds, depending on the number of axles, axle lengths, and the overall truck-trailer length.

➤ For any truck over 90,000 pounds, the fines are computed all the way back to the 80,000 pounds



# Infrastructure Challenges

## Designated Future Interstate Routes in North Carolina



# Great Challenges = Greater Opportunities





# Is This The Solve All?



# Current & Future Opportunities

- Truck driver courses that emphasize forest products industry.
  - Beaufort County Community College.
- Collaborate with similar interest groups to develop training programs.
- Support legislation that decreases CDL requirements
  - Largest and most trainable workforce is 18-21.
- Support “grandfathering” of future Interstates.
- Partnerships involving logistics studies and cooperatives.
- Support autonomous vehicle studies.



# Questions?

---



John Hatcher, Ph.D.  
NCFA Executive Vice President  
North Carolina Forestry Association  
(800) 231-7723 ext. 5  
[JHatcher@ncforestry.org](mailto:JHatcher@ncforestry.org)